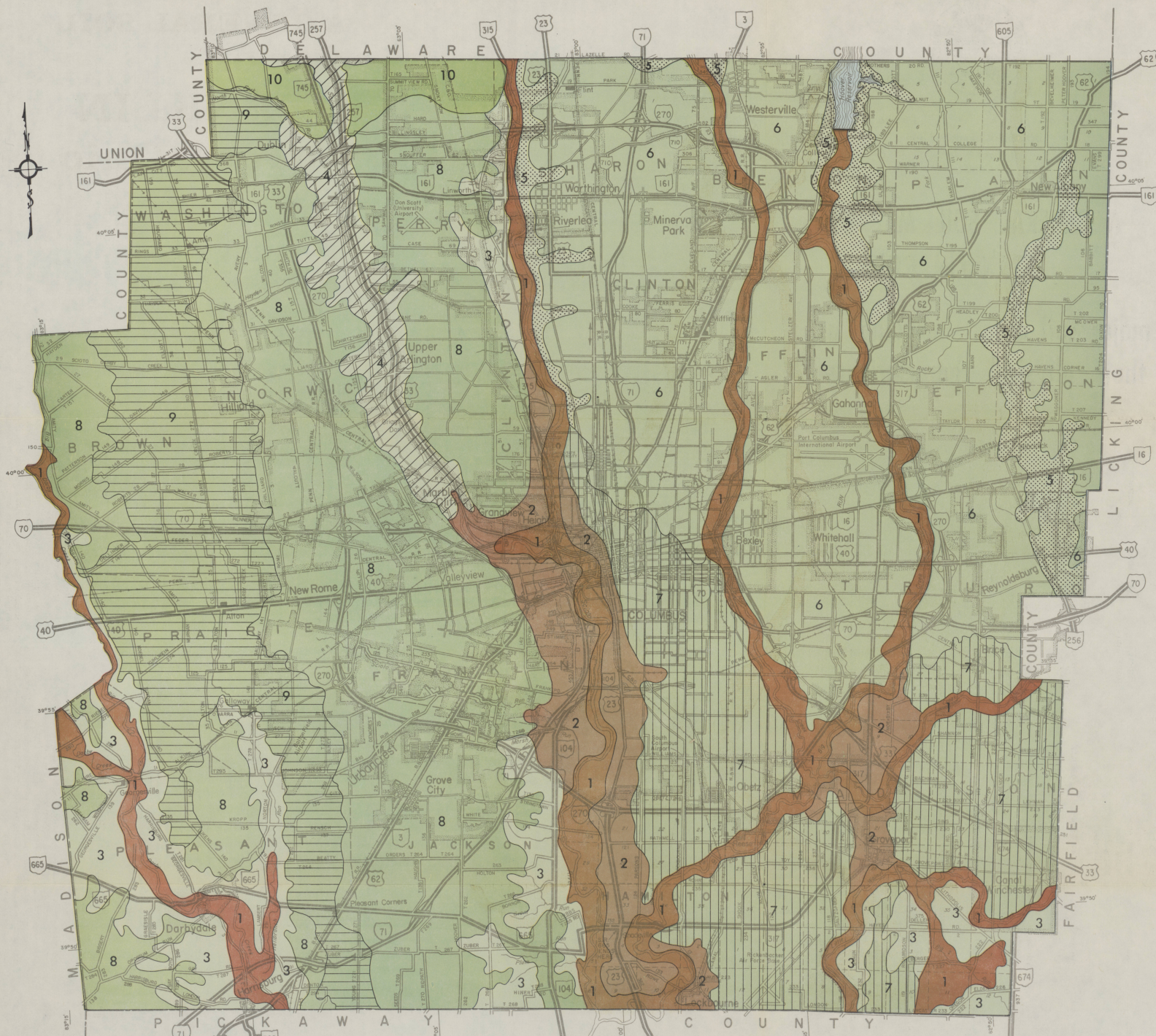


A GENERAL SOIL MAP OF FRANKLIN COUNTY, Ohio



LOCATION IN STATE



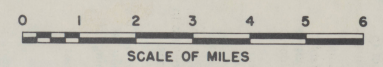
ACKNOWLEDGMENT

This map was prepared by N. A. McLoda, E. L. Milliron and R. J. Scherzinger, soil scientists of the Soil Conservation Service, United States Department of Agriculture. The information was compiled from the Franklin County Soil Survey made by the Soil Conservation Service and Division of Lands and Soil, Ohio Department of Natural Resources and other agencies cooperating in Ohio's Soil Inventory Program.

Revised Edition
1977

Published by
Ohio Department of Natural Resources
Division of Lands and Soil
Columbus, Ohio

Base Map from The Ohio Department of Transportation



SOIL ASSOCIATIONS

- SOILS FORMED IN ALLUVIUM AND GLACIAL OUTWASH ON STREAM FLOOD PLAINS AND TERRACES**
- 1** MEDWAY-GENESEE ASSOCIATION: Nearly level, moderately well drained and well drained soils.
 - 2** ELDEAN-OCKLEY-WARSAW ASSOCIATION: Mostly nearly level to gently sloping, well drained soils.
- SOILS FORMED MAINLY IN GLACIAL TILL ON UPLANDS**
- 3** MIAMIAN-CELINA ASSOCIATION: Gently sloping to very steep, well drained and moderately well drained soils.
 - 4** MILTON-RITCHEY-MIAMIAN ASSOCIATION: Nearly level to very steep, well drained soils.

- 5** CARDINGTON-ALEXANDRIA-BENNINGTON ASSOCIATION: Gently sloping to very steep, somewhat poorly drained to well drained soils.
- 6** BENNINGTON-PEWAMO ASSOCIATION: Nearly level to gently sloping, somewhat poorly drained and very poorly drained soils.
- 7** CROSBY-BROOKSTON-KENDALLVILLE ASSOCIATION: Nearly level to sloping, very poorly drained to well drained soils.
- 8** CROSBY-BROOKSTON ASSOCIATION: Nearly level to gently sloping, somewhat poorly drained and very poorly drained soils.
- 9** BROOKSTON-CROSBY-LEWISBURG ASSOCIATION: Nearly level to gently sloping, very poorly drained to well drained soils.
- 10** GLYNWOOD-BLOUNT ASSOCIATION: Nearly level to sloping, moderately well drained and somewhat poorly drained soils.