

**SCIOTO OLENTANGY
RIVERFRONT DEVELOPMENT**



Ohio
307.3
S417

LABRENZ & ASSOCIATES

LANDSCAPE ARCHITECTS

The City of Columbus
Columbus, Ohio



191 218 6663

PUBLIC LIBRARY OF FRANKLIN COUNTY
AND COLUMBUS
OHIO AND OHIO DIVISION

Ohio
1307.3
S417
307.3
S417-p

Gentlemen:

On January 29, 1965 the City of Columbus authorized a study to develop a long-range Master Plan of the Scioto and Olentangy Rivers within the limits of Franklin County.

Enclosed herewith is a design concept which encompasses many of the elements that affect the use and appearance of the two rivers. This report is the stage two submittal of a two-stage design study.

We appreciate the cooperation and counsel extended by the staffs of the City of Columbus, the Franklin County Regional Planning Commission, and the Downtown Area Committee of the Chamber of Commerce.

BHT
JAN

Respectfully submitted,

James A. Labrenz
for
LABRENZ & ASSOCIATES
LANDSCAPE ARCHITECTS



CONTENTS

Introduction	2
Existing Land Use	3
Scioto River	7
Olentangy River	8
Proposed Land Acquisition	9
Downtown Area West	13
Civic Center Area	16
Development Phases	19
Land Acquisition & Development	22
Summary	24

INTRODUCTION

The Scioto and Olentangy Rivers, both flowing through the city, provide considerable recreational opportunities for the citizens of Columbus. Fortunately, the preceding generations planned and subsequently built a series of large dams which provided excellent reservoirs for boating and other water sports activities. Columbus has also benefited immensely from the removal of the slum areas along the river from Spring to Town Streets. The magnificent Governmental Complex that replaced the slums makes a lasting impression on visitors to our city.

2 Much has been accomplished, but a great deal more planning must necessarily be done to ensure future generations adequate use of the rivers. To ensure proper improvement of both the Scioto and Olentangy riverfronts, a comprehensive Master Plan must be developed which includes existing recreation areas, undeveloped city-owned land and future acquisition of land. Although boating and related water sports activities are of prime importance, the improvement of the areas immediately adjacent to the two rivers is highly desirable to provide pedestrian and vehicular circulation as well as cultural and recreational activities.

To achieve a truly comprehensive plan, this study extends from the Big Walnut Creek south of the Franklin County line, north on the Scioto to the Columbus Zoo, and from the confluence of the two rivers north on the Olentangy to Route 161 in Worthington.

EXISTING LAND USE



MARBLE CLIFF QUARRIES

GRIGGS RESERVOIR

WEST BROAD STREET

SULLIVANT PARK

OHIO STATE UNIVERSITY

WHITTIER PARK

CENTRAL BUSINESS DISTRICT

INTERBELT EXPRESSWAY

NORTH

PARK OF ROSES

SCIO TO RIVER

SCIO TO RIVER

SCIO TO RIVER

SCIO TO RIVER

SCIO TO RIVER

SCIO TO RIVER

SCIO TO RIVER



BIG WALNUT CREEK

FUTURE WASTEWATER TREATMENT PLANT

FUTURE WASTEWATER TREATMENT PLANT

OUTERBELT EXPRESSWAY

121 SOUTH

STATE ROUTE 23

PICKAWAY COUNTY
FRANKLIN COUNTY

LOCKBOURNE

INDUSTRIAL LOT

INDUSTRIAL LOT



O'SHAUGHNESSY DAM

O'SHAUGHNESSY DAM

COLUMBUS ZOO

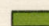

STATE ROUTE 161

FRANKLIN COUNTY
DELAWARE COUNTY

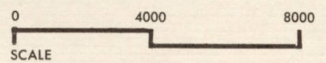
PROPOSED OLENTANGY EXPRESSWAY

WORTHINGTON

LEGEND

-  EXISTING RECREATION AND OPEN SPACE AREAS
-  OTHER CITY, STATE AND FEDERAL LAND

EXISTING LAND USE



SCIOTO RIVER

The improvement of the land adjacent to the Scioto River would provide a continuous series of open spaces, or greenbelt, where possible, south from the Columbus Zoo through the downtown area, to the Big Walnut Creek. The upper Scioto River above Griggs Dam is developed at present for recreational activities. Below Griggs Dam there are large portions of undeveloped land, including Marble Cliff Quarries which would be feasible to acquire in sections, as the areas are abandoned. Acquisition of this land, or parts of it, would help to form a link between the Griggs Reservoir and the downtown area. It is also desirable to acquire the riverfront land from Griggs Reservoir to O'Shaughnessy Dam for pedestrian paths and trails. Considerable boating facilities exist from Griggs Dam northward to Hayden Run Road. However, with major river channel improvement, it would be possible to have boating from O'Shaughnessy Dam to the Water Works Dam above Sullivant Park.

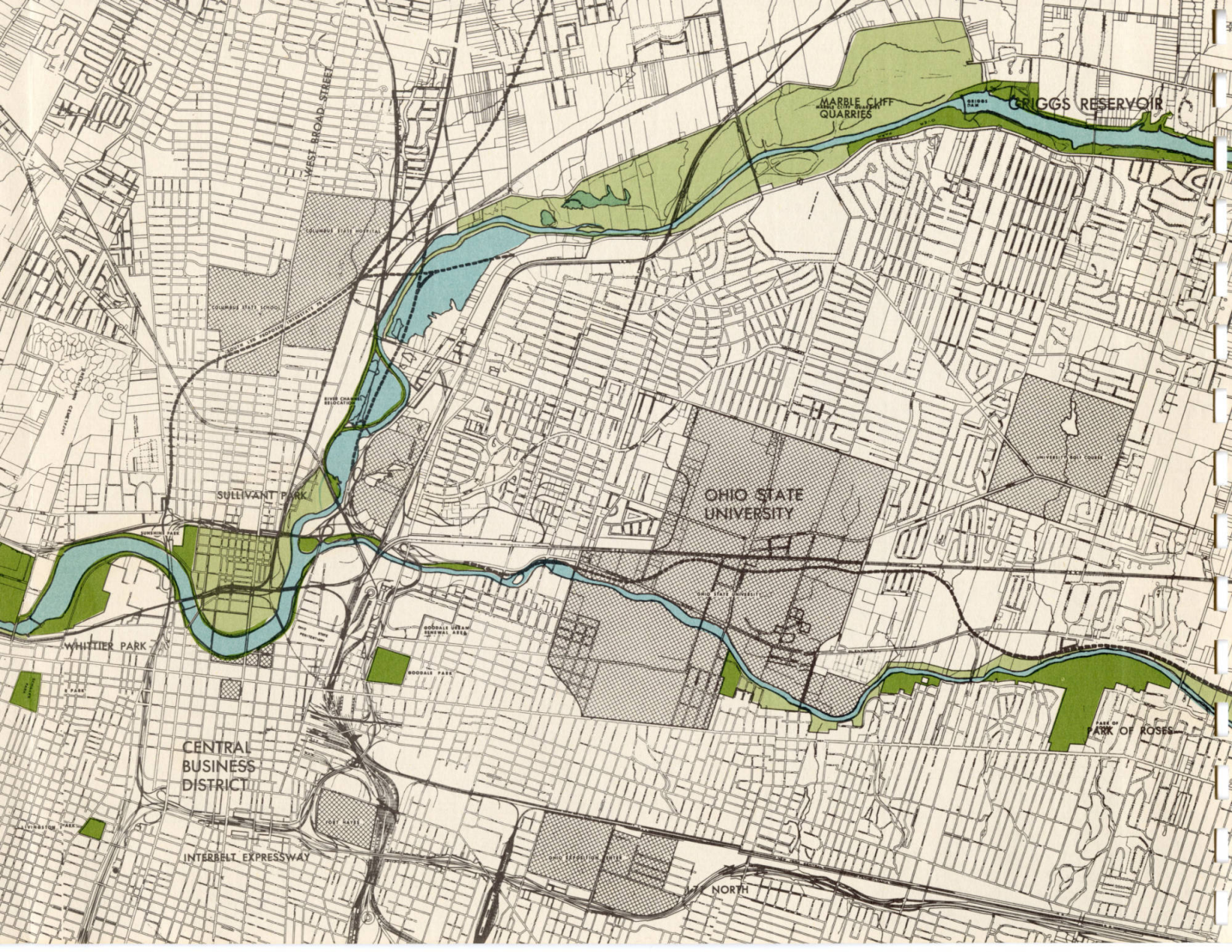
The Scioto River and adjacent land south of the Greenlawn Dam to the Big Walnut Creek is essentially undeveloped. Large portions of open land border the river on both sides and acquisition of these areas would complete the greenbelt. Development of these open spaces would include picnic and camping areas, bridle trails, boat launching facilities, active recreation areas and pedestrian and vehicular circulation. Boating would be limited to small pleasure craft such as canoes and rowboats. However, some river channel improvement would be necessary.

OLENTANGY RIVER

At present, there are fewer recreational areas along the Olentangy River than are found along the Scioto River. A greenbelt would be provided from Route 161 in Worthington to the confluence of the two rivers. The development of the west bank of the Olentangy River will be determined by the location of the proposed Olentangy Expressway.

8

A system of pedestrian footpaths and walks is possible along the west side of the river between Route 161 and the Scioto River. However, pedestrian circulation is limited on the east bank because of considerable industrial and residential development. Additional improvements on the west bank of the river would include picnic areas and launching facilities for small boats. These facilities would be located at various points along the river from Dodridge Street to Route 161. Boating, limited to canoes and rowboats, would be possible from the Dodridge Street Weir north to Route 161. Power boating would be feasible south of the King Avenue Dam provided there is river channel improvement.



MARBLE CLIFF
QUARRIES

GRIGGS RESERVOIR

WEST BROAD STREET

GRANDVIEW STATE HOSPITAL

COLUMBIAN STATE SCHOOL

STATE CHURCH
BROADCASTING

SULLIVANT PARK

OHIO STATE
UNIVERSITY

WHITTIER PARK

MARSHALL GREEN
GENERAL AREA

RODGATE PARK

PARK OF ROSES

CENTRAL
BUSINESS
DISTRICT

INTERBELT EXPRESSWAY

NORTH



BIG WALNUT CREEK

FUTURE WASTEWATER TREATMENT PLANT

FUTURE MURKIN DRAIN

OUTERBELT EXPRESSWAY

I-71 SOUTH

STATE ROUTE 23

PICKAWAY COUNTY
FRANKLIN COUNTY

LOCKBOURNE

AMERICAN POST



STATE ROUTE 161

O'SHAUGHNESSY DAM

O'SHAUGHNESSY DAM

COLUMBUS ZOO

WORTHINGTON

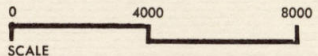
PROPOSED OLENTANGY EXPRESSWAY

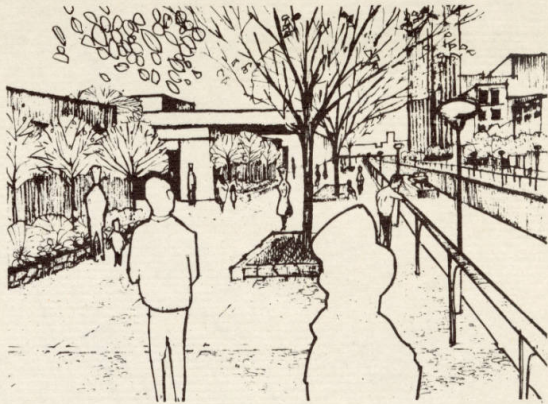
FRANKLIN COUNTY
DELAWARE COUNTY

LEGEND

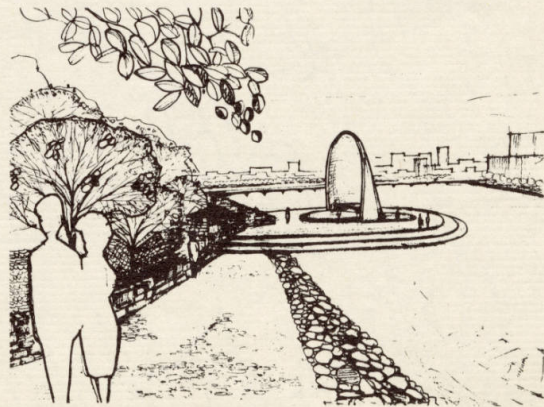
- EXISTING RECREATION AND OPEN SPACE AREAS
- PROPOSED LAND ACQUISITION
- OTHER CITY, STATE AND FEDERAL LAND

LAND ACQUISITION





VIEW ALONG CANAL



VIEWING STAND AREA

DOWNTOWN AREA WEST

The downtown area forms the nucleus of the riverfront development and is of prime importance to the total design concept. Major development would be centered in the river bottom area immediately west of Central High School. This area, bounded on the east, north and south by the Scioto River and on the west by the innerbelt, would reflect the cultural as well as recreational interests of many varied groups. The resulting complex would include extensive park areas, recreational grounds, boating facilities, Governmental buildings, certain cultural facilities, and commercial and residential areas.

An integral part of this development would be a canal located along the innerbelt. The canal would provide an opportunity to develop a riverfront atmosphere with the construction of a mall servicing specialty shops. A boat launching area would be created from which small craft could navigate the waters of the Scioto. Boating through the canal is dependent upon the raising of Greenlawn Dam and elimination of the Main Street Weir, or, if the Greenlawn Dam is not raised, relocation of the Main Street Weir approximately 2,000 feet downstream.

The plan is strongly influenced by existing major thoroughfares, expressways, rail lines, and firmly-established commercial and residential developments. Proposed elimination of some railroad trackage is desirable to facilitate development of the area.



SULLIVAN PARK

SPRING-SANDUSKY INTERCHANGE

MOUND STREET INTERCHANGE

TOWN STREET

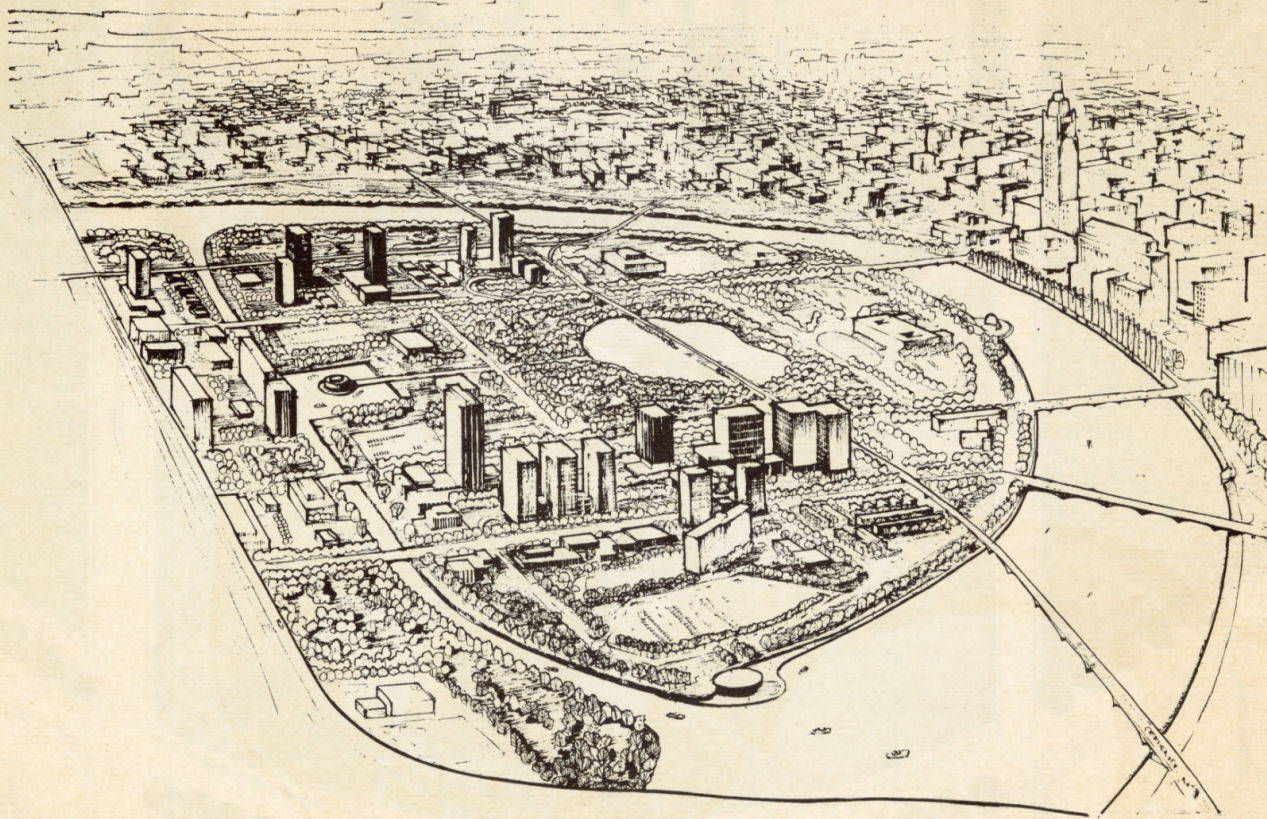
BROAD STREET

CENTRAL HIGH SCHOOL

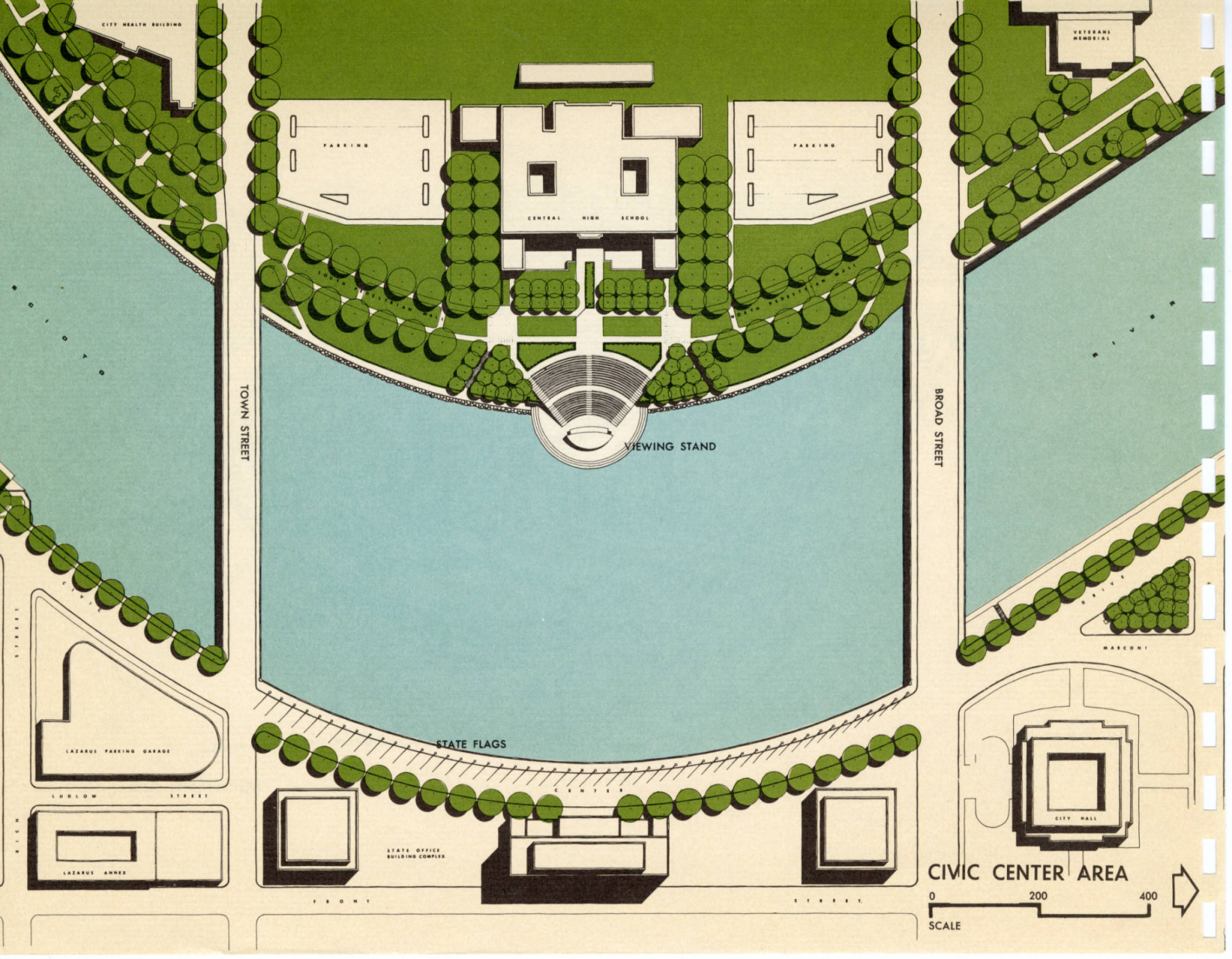
WHITTIER PARK

DOWNTOWN AREA WEST





DOWNTOWN AREA WEST



CITY HEALTH BUILDING

VETERANS MEMORIAL

PARKING

CENTRAL HIGH SCHOOL

PARKING

TOWN STREET

BROAD STREET

VIEWING STAND

STATE FLAGS

MARCOSI

LAZARUS PARKING GARAGE

LUBLOW STREET

LAZARUS ANNEX

STATE OFFICE BUILDING COMPLEX

CITY HALL

CIVIC CENTER AREA

0 200 400
SCALE

CIVIC CENTER AREA

The Civic Center area has been under considerable study by the Downtown Area Committee. Included in this area are Central High School, Veterans' Memorial, and the City Health and Safety Building on the west side of the river, and the State Office Building Complex on the east.

Major improvements for this area would include the construction in the hillside on the west bank of the river between Town and Broad Streets, of viewing stands from which audiences could listen to band and symphony concerts, choral groups, barbershop quartets, and view pageants and water sports on the river. On the east side of the river, between Town and Broad Streets, flagpoles for the fifty state flags would be installed with lighting from below, and with suitable plates designating the name of the state, its capital, and the date it was admitted to the Union.

A pedestrian mall, extending from Rich Street to Veterans' Memorial, would be developed utilizing the abandoned Washington Boulevard right-of-way. In future stages of development, the mall would be extended from Sullivant Park along the river to Whittier Park. Concurrent with this would be a system of secondary walks at water's edge, providing ideal areas for fishing. At the present time, Whittier Park is being developed by the City of Columbus Parks and Forestry Department. Sullivant Park will include boat launching facilities, spaces for picnicking and related activities.

It is anticipated that all types of pleasure craft, including canoes, paddleboats, rowboats, power boats and even small sailboats, would be permitted, except in the area north of the Greenlawn Avenue Dam adjacent to Whittier Park, which would be limited to small fishing boats. An excursion or sight-seeing boat large enough to hold benches, tables and chairs, and a small kitchen from which meals and snacks could be served, might be used. Boating would also be provided on the Olentangy up to the King Avenue Dam, if river channel improvements were made.

DEVELOPMENT PHASES

To ensure a logical sequence of land acquisition and development of the Scioto and Olentangy Rivers, a comprehensive plan must be divided into proper phases.

The first phase of development would include the pedestrian mall on the west side of the Scioto River from the City Health and Safety Building, including the viewing stands, to Veterans' Memorial, and on the east side of the river including Civic Center Drive from the Olentangy River to Whittier Park. The boat launching facilities in the Sullivant Park development would be included in this phase.

The second phase of development would be the completion of Sullivant Park. Development of this area would necessitate clearing of existing housing and miscellaneous commercial establishments.

The third phase of development would complete the greenbelt between Sullivant Park and Whittier Park. Additional areas would include the land adjacent to Central High School, bounded on the west by the Chesapeake and Ohio Railroad.

The fourth and final phase of the downtown development would be the area west of the Chesapeake and Ohio Railroad continuing to the innerbelt and including Sunshine Park. Development of this area, including the canal, is based entirely upon, and coordinated with, urban renewal planning, which is now under study by local authorities.

Concurrent with development of these first, second and third phases, would be the acquisition and improvement of the land adjacent to the Scioto and Olentangy Rivers. Development of these areas would be on a continuing basis, determined by availability of funds for land acquisition. The early development of the Olentangy River and the Scioto River south of the Greenlawn Dam, is more desirable since considerable recreational facilities already exist along the upper Scioto River.



PHASE I

PHASE II

PHASE IV

PHASE I

PHASE III

WHITTIER PARK

PHASE I

DEVELOPMENT PHASES

0 1000 2000

SCALE



LAND ACQUISITION AND DEVELOPMENT

ESTIMATED COST	ACRES	LAND ACQUISITION	DEVELOPMENT
PHASE I			
Existing Recreation Land	57		
City Owned Undeveloped Land	46		
Amphitheater, Seating & Stage			\$220,000.00
Site Improvement			234,440.00
Planting & Seeding			47,500.00
Lighting & Flags			101,800.00
Sullivant Park			117,000.00
Additional Whittier Park Development			45,000.00
			\$765,740.00
 New Land	 15	 \$63,000.00	
 PHASE II	 21	 Urban Renewal	
PHASE III	54	Urban Renewal	
PHASE IV	102	Urban Renewal	

SUMMARY

1. Phase One of the Master Plan should be implemented in accordance with the design concept established as soon as funds are available.
2. A logical program of land acquisition should be initiated as soon as possible. Early consideration should be given to those areas adjacent to the Scioto River south of the Greenlawn Dam, and along the Olentangy River north of the Ohio State University.
3. The development of existing recreation areas and facilities should be up-graded and coordinated with the Master Plan.
4. The City of Columbus should review methods of financing the riverfront project, either within the limits of the Capital Improvements program, by a special bond issue, or by other appropriate means.
5. The development of the Scioto and Olentangy Rivers represents a magnificent opportunity for future generations to take full advantage of the recreational and cultural facilities outlined in the Master Plan.